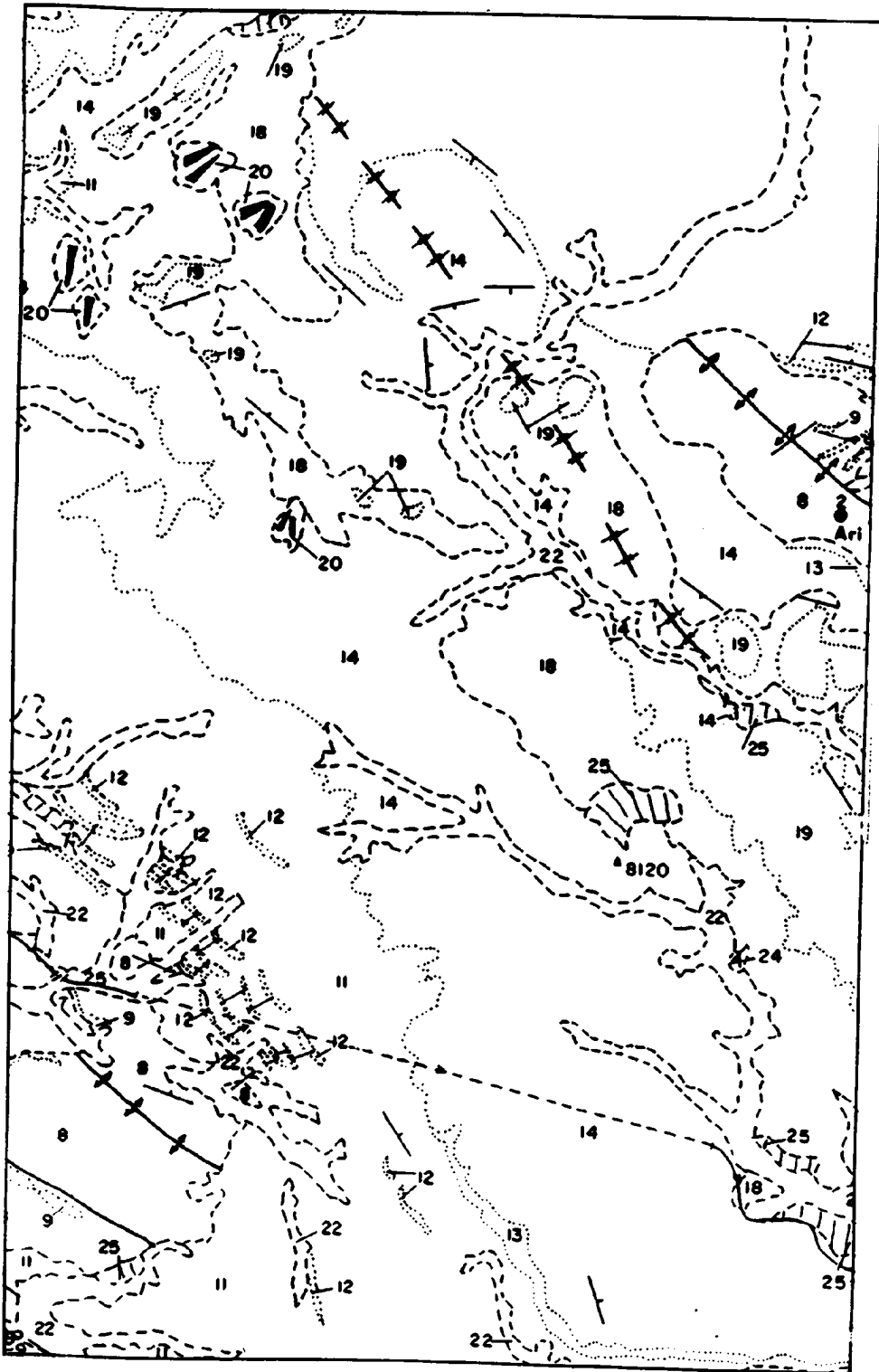
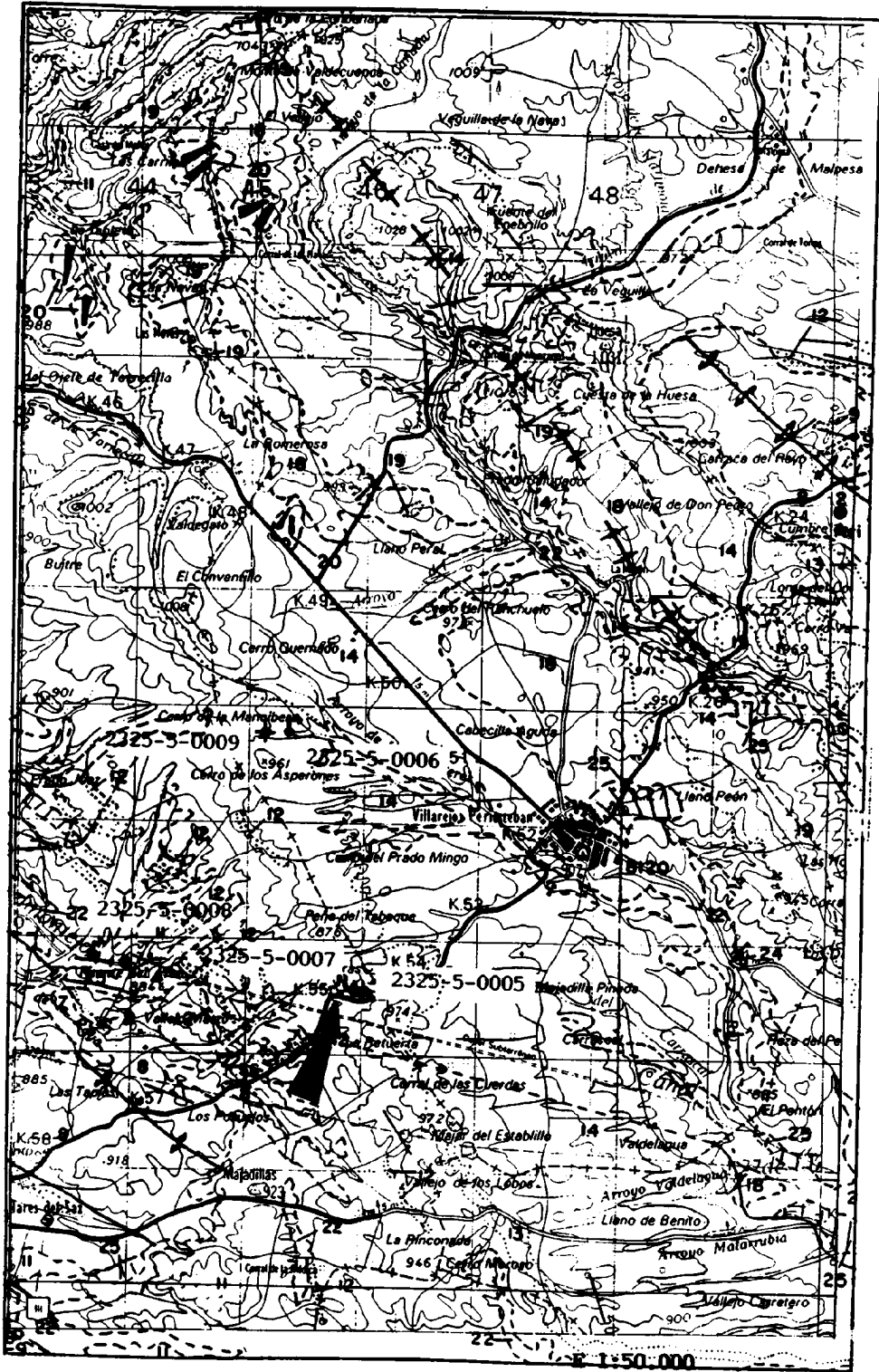
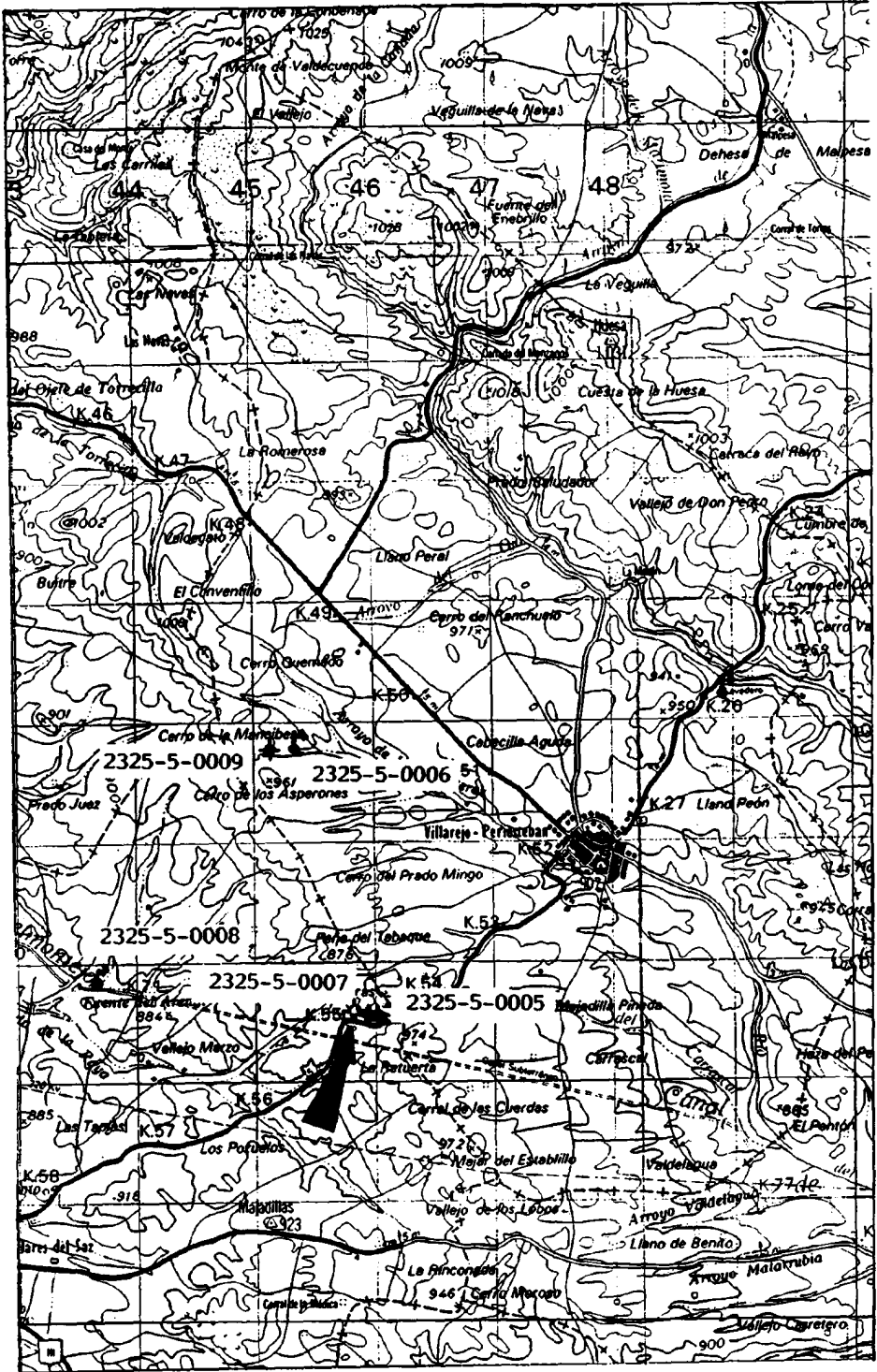


MAPA GEOLOGICO Y DE SECCION



MAPA GEOLOGICO Y DE SITUACION

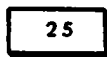
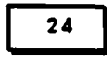
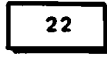
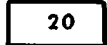




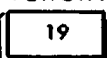
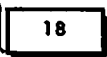
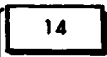
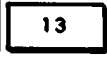
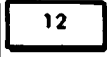
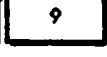

E 1:50.000

LEYENDA DEL MAPA GEOLÓGICO Y DEL DE SITUACIÓN

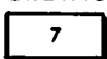
CUATERNARIO

-  Coluviones: arcillas y arenas
-  Cono de deyección: arenas
-  Fondos de Valle: arenas, gravas
-  Glacis: arenas con cantos






TERCIARIO

- Mioceno  Calizas tableadas, arcillas, margas
- Mioceno  Arcillas yesíferas rojas
- Mioceno  Calizas tableadas blancas, grises
- Mioceno  Arcillas yesíferas, margas, calizas
- Oligoceno  Canales conglomeráticos
- Oligoceno  Areniscas, margas, arcillas y conglomerados
- Oligoceno  Calizas con nódulos de sílex
- Eoceno  Arenas rosas y blancas

CRETACICO DE TRANSICIÓN

- Paleógeno  Margas, arcillas y yesos
- Cretácico

SIGNOS CONVENCIONALES

- Contacto concordante
- Contacto discordante
-  Sinclinal
-  Anticlinal
-  Sondeo
-  Manantial
-  Sondeo propuesto